

**SHIV ENGINEERS**

An ISO 9001:2008 Certified Company



**SHIV ENGINEERS**

HOUSE OF INDUSTRIAL ELECTRICAL PRODUCTS

Pune :  
Shop No. 2, Shreeyash Indu  
Premises Co. op. Society Ltd C-38  
Near IBMR College, MIDC  
Chinchwad, Pune-411019

Tel.: 020-27440211  
Mobile: 9372555611/9372355611  
E-mail: shivengi@gmail.com

Vasai :  
Shop No. 51/E,  
Dewan Apartment  
No. 02 Navghar, Vasai Road (East)  
Palghar - 401210

Mobile: +91 9321858109/9372355611  
E-mail: shivengi.vasai@gmail.com

OVERVIEW



## SHIV ENGINEERS INTRODUCTION

We would like to take this opportunity to briefly introduce our company, **SHIV ENGINEERS**. We authorised distributor for **POLYCAB, TEKNIC, CONNECTWELL & MG ELECTRICA**. SHIV ENGINEERS is engaged in a wide range of Products in the Industrial Electrical field. Our product includes Wire's & Cable's, Terminal Block, High Grade PVC Flexible Conduit, Limit Switch, Proxy Switches, High Performance Aluminium & Copper LUGs, Indication For Control Panel, etc. Established in 2007, our company is committed to maintain exceed standards that are demanded by the best companies in the business of Electrical's field. We believe in sustainable and enjoyable long-term relationships with Principals, Employees, Customers and Suppliers.



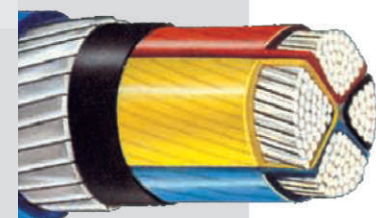
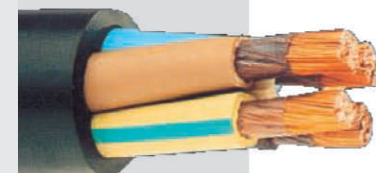
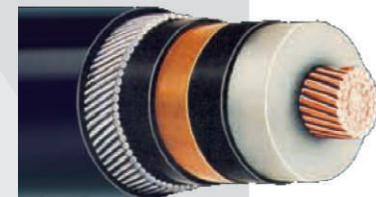
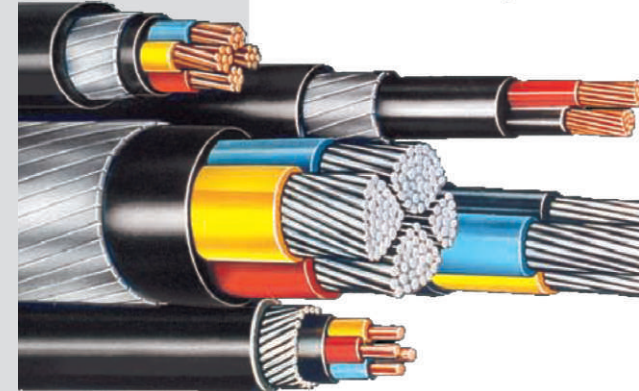
TEKNIC



India's No.1 Cables & Wires Company

## PRODUCT RANGE

- L.V. PVC & XLPE POWER CABLES WITH COPPER AND ALUMINIUM CONDUCTOR
- L.V. PVC & XLPE CONTROL CABLES WITH COPPER CONDUCTOR
- M.V. POWER CABLES UPTO 33 kV
- EHV CABLES FROM 66kV TO 220kV
- M.V. / L.V. AERIAL BUNCHED CABLES (ABC)
- ZERO HALOGEN CABLES
- FIRE SURVIVAL CABLES (FS)
- INSTRUMENTATION CABLES SCREENED / UNSCREENED
- INDUSTRIAL BRAIDED CABLES
- THERMO COUPLE / COMPENSATING CABLES
- LEAD SHEATHED CABLES
- RUBBER CABLES
- RAILWAY SIGNALLING CABLES
- TELEPHONE CABLES - DRY & JELLY FILLED
- BUILDING WIRES- FR FRLS / FRZH 1 FRLF FRFS
- SINGLE CORE INDUSTRIAL FLEABLES - PVC / FR FRLS / FRZH / HRFR HR I HR-FRLS / FRLF FRFS
- MULTI CORE INDUSTRIAL FLEXIBLE CABLES
- SUBMERSIBLE FLAT AND ROUND CABLES
- SUBMERSIBLE WRAPPED WINDING WIRES
- COAXIAL CABLES
- LAN CAT-SE / CAT 6 CABLES
- WELDING CABLES
- SOLAR AC / DC CABLES
- STEEL BRAIDED CABLES
- SPECIALITY CABLES-SUITED FOR MARINE/ OIL & GAS / EXTREME FIRE CONDITIONS/ HIGHLY CORROSIVE ENVIRONMENT! TRAFFIC / AIRCRAFT / SPACE STATION / AUTOMOBILES



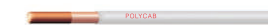
MULTI CORE INDUSTRIAL FLEXIBLE CABLES



SUBMERSIBLE FLAT AND ROUND CABLES



SUBMERSIBLE WRAPPED WINDING WIRES



LV POWER CABLES



LV CONTROL CABLES



MV POWER CABLES



EHV POWER CABLES





# TEKNIC



**CONTROL AND SIGNALING DEVICE 22.5MM DIA MATEL SERIES**  
Push buttons, indication lamp or led switches, etc



**TEKNIC EUCHNER INDUCTIVE PROXY SWITCH**  
8mm to 30mm dia, 24v, 230v ac/dc  
With high performance range of sensing distance 1mm to 15mm  
Connector type or cable type with led

**TEKNIC Euchner single and multiply limit switch**  
Multiply limit switch RGBF type  
Multiply limit switch SN or SG type  
Single plunger N1A type  
Trip rail or trip dog systems



**TEKNIC EUCHNER SINGLE LIMIT SWITCH**  
Limit switch according to EN50041  
IP 67 anodised die cast alloy  
NG1 type  
Normal lever, adjustable lever etc.

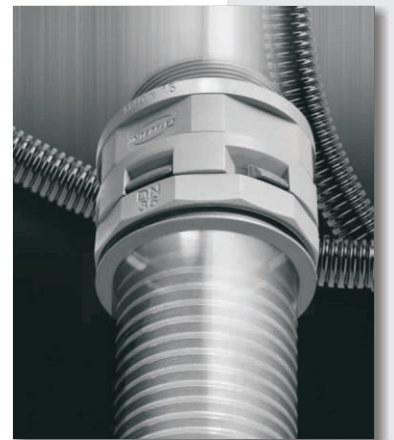


**Cable Carriers**  
plastic and metal-plastic  
open type & closed type

**DAKE RIEL CABLE CARRIERS**



**INTERFLEX POLYIMIDE 6 FLEXIBLE CORDUIT**  
AND GLAND OR ACCESSORIES ETC  
SLITTED Or UN SLITTED, IP 67, 6.4 to 91.5 mm



**CONTREOL STATION BOXIS**  
ABS, PRESS DIE CAST, ETC  
1WAY - 6WAY ABS OR MATEL ENLOCER

**MCB'S, MPCBS,**  
**ROTRY CAM SWITCHES, DB'S ETC**  
**RATING 0.5A-120A**



**APPLICATION SWITCH**  
ROCKER SWITCH, MICROSWITCH,  
TECT SWITCH ETC



**Unmatched Quality & High Performance**  
**Aluminum & Copper LUGs.**







#### TERMINAL BLOCK POLYAMIDE

SCREW MOUNTING OR PRESS FIT CONNECTORS  
FUSE TERMINAL, DOUBLE LEVEL TERMINAL  
ERTHING TERMINAL'S  
FOR 0.5SQ.MM – 95SQMM CABLES  
TERMINAL MARKER SYSTEMS

#### TERMINAL BLOCK MELAMINE

ERTHING TERMINAL'S  
FOR 0.5 sq. mm – 95 sq. mm CABLES  
TERMINAL MARKER SYSTEMS  
STUD TYPE, BUS BAR TYPE,  
DISCONNECT & TEST TERMINAL



#### DIN RAIL POWER SUPPLY

RATING 5W TO 480W  
MCB CHANNEL MOUNTING OR SCREW MOUNTING



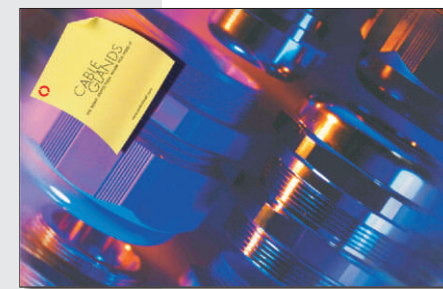
#### INTERFASE REALY MODULES

SINGLE OR TWO CHANGEOVER  
1, 2, 4, 8, 16 CHANNEL  
12V, 24V, 110V, 230V AC/DC  
WITH FUSED, TRANSISTER, SSR, DIODE, VERIESTER,  
MALE FEMALE DSUB MODULES, RJ45, RC 32 CHANNEL MODULES,  
COMPONENT CARRIER MODULES

## bimed

#### CABLE GLAND

THE RIGHT PROTECTION FOR YOUR  
WIRES AND CABLES  
POLYAMIDE 6, IP 68, RANGE PG 7 TO  
PG 48, M12-M63  
PG THRED, METRIC THRED



#### CONDUITS

##### VARIETY TO SUIT ALL YOUR APPLICATION NEEDS

These conduits have an extremely small bending radius and offer high impact resistance. When combined with Controlwell Conduit Glands they offer IP67 protection to cables housed there in.

They come with added benefits of being UV Resistant, Halogen Free, Acid Proof and Flame Retardant in nature.

With approvals like UL, VDE, CSA and CE Mark these conduits are the

I - Polyamide I - Polyethylene I - Polypropylene I - Galvanized Steel I - Stainless Steel  
I - PVC coated Galvanized Steel I - Anaconda Liquidtite & Sealtite Conduits



#### HIGH GRADE POLYAMIDE SLITTED / UNSLITTED FLEXIBLE CONDUITS SIZE: 5 mm TO 91.5 mm

Temperature Range - 40°C to + 105° C  
Continuous, + 130°C Short Term  
Protection Class - IP 67



#### POLYETHYLENE FLEXIBLE CONDUITS SLITTED / UNSLITTADE SIZE: 5 mm to 91.5 mm

Temperature Range - 15°C to + 60° C Continuous,  
+ 80°C Short Term  
Protection Class - IP 68



#### GALVANISED STEEL CONDUITS-PVC SHEATHED SIZE 7 mm - 48 mm

Temperature Range - 25°C to + 100° C Continuous  
Protection Class - IP 67

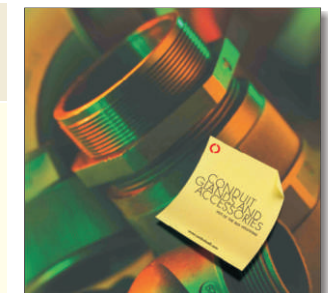
Temperature Range - 50°C to + 250° C Continuous  
Protection Class - IP 50



#### CONDUITS ACCESSORIES

##### OUT OF THE BOX SOLUTIONS FOR YOUR CABLE PROTECTI ON NEEDS

These glands are available in wide variety of sizes and orientation to suit straight 90 and 45 cable entry. Available with Pg, Metric, PF, NPT and UNEF thread systems For applications where the mounting surface is not threaded, glands with flanges Accessories like couplers, mounting clips and tube end caps complement the range of Conduit Glands ensuring high IP protection class and ease of installation. These products carry international approvals like VDE, UL & CE mark



#### HI TECH SOLUTIONS FOR CABLE PROTECTION IN MOTION

I - OPEN TYPE I - SEMI ENCLOSED TYPE  
I - FULLY ENCLOSED TYPE I - SLIDING TYPE

